

## CornCob Laboratory Animal Bedding



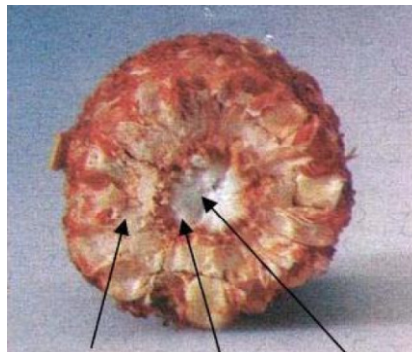
### Corn Cob Product Information

Corncob consists of parts with different characteristics, namely-fine chaff, coarse chaff and wooden ring, which have various applications.

Each part of the cob varies in its degree of fibrousness, absorbency and hardness.

Corn Cob's are milled and dried using a unique technique.

The product is precisely screened and thoroughly air-washed for uniform quality and size, in line with Global laboratory standards.



Outer Soft beeswing    Soft Centre Pith    Hard Middle Woody ring

### Product Characteristics

- Biodegradable
- Non-toxic
- Inert
- Absorbent-holding up to four times its weight of fluid
- Available in various uniform sizes
- Tough resilient & durable

In addition, Corn Cob bedding is low dust, which is a big advantage to customers Using Individually Ventilated Cages (IVC's) and isolators, where HEPA filters Often get clogged by conventional bedding.

Corn Cob is also more densely packed, meaning that more cages can be filled from a single bag and the bags last longer.

Using Corn Cob bedding, rodent cages can be changed as infrequently as every 2 Week, as the cage remains dry and clean longer and labour is reduced as corn Cob bedding rarely gets wet of sticks to the cage requiring scrubbing or soaking.

## Product Specifications

Clean, dry corncobs, are precision ground to retain only the material from the Woody ring of the cob. The cobs are heat treated to achieve moisture content not Greater than 9% and to control any pathogenic bacteria. Typical final moisture after milling is 6% +/-2%.

The corncob bedding products are available in a variety of particle sizes such as 1/8", 1/6" and 1/4" and a blend of all.

Due to the wide variety of applications, corncob is available in either polywoven Bags for immediate use or in special 3 layer paper bags, suitable for autoclaving.

The Corn Cob bedding comes in 20 & 25 Kg bags, but larger and smaller packaging is available, depending on quantity ordered.

The corncob bedding product is bagged immediately after manufacture and stored in vermin-proof, clean and dry storage facilities to ensure quality.

The corncob bedding product is shipped on clean stretch-wrapped pallets to Ensure product protection

**Storage conditions-** Store in dry place

## Temperature and Humidity

The temperature and humidity of the warehouse is monitored to ensure that Products are not compromised.



## Quality Control and Quality Assurance

**Product** –The Corn Cob used in Corn Cob's is 100% corncob. No other Components or additives are used.

Corn Cob's are produced from the woody-ring portion of the corncob and the Pelleted corncob is produced from the pith and chaff (beeswing) portions.

**Processing** - As the corncobs are introduced into the mill they pass through a hammer mill machine that produces corncob fractions. The corncob fractions are then heat-dried, using a rotary dryer system. The Corn Cob is heated from 60°C, over 15 minutes, up to 95°C, where it stays for 2-3 minutes. An aspiration process separates the woody ring portion of the corncob from the pith and chaff portions. The particles are then sized and separated through a series of screens to ensure conformity in size and to U.S. standards.

The pith and chaff portions are processed through a pellet mill to produce the Pelleted corncob product.

**Product Analysis** – The final product is monitored for several criteria, including Average particle size, absorption rates and contamination (see below):

TEST	TEST	TEST
Arsenic	Heptachlor-epoxide	Parathion-ethyl
Cadmium	Gamma-HCH(Lindane)	2-chlorobiphenyl
Mercury	Dieldrin	2,3-Dichlorobiphenyl
Lead	O,P-DDT	2,2',3,3',4,4',6-Heptachlorobiphenyl
Selenium	P,P-DDT	2,2',4,4',5,6-Hexachlorobiphenyl
Nickel	Aldrin	2,2',3,3',4,5',6,6'-Octachlorobiphenyl
Aflatoxin B1	Cis-Chlordane	2,2',3',4,6-Pentachlorobiphenyl
Aflatoxin B2	Trans-chlordane	2,2',4,4'- Tetrachlorobiphenyl
Aflatoxin G1	Chlorpyrifos	2,4,5- Trichlorobiphenyl
Aflatoxin G2	Malathion	Aerobic Plate Count

**Mfg By: DESERT ROSE MISR CO. 150 Zahraa City, Nasar City, Cairo EGYPT.**

## Exclusively Imported & Distributed By:

**ATNT Laboratories (An ISO 9001:2015 Company)**

Unit No. 812, 8<sup>th</sup> Floor, Excellencia Lodha Supremus, Rd No. 22, Wagle Estate, Thane-400604

Tel: 022-25830958, Fax: 022-25830959, Mobile: 9892520959

Email: [info@atntlabs.com](mailto:info@atntlabs.com), WWW: [atntlabs.com](http://atntlabs.com)